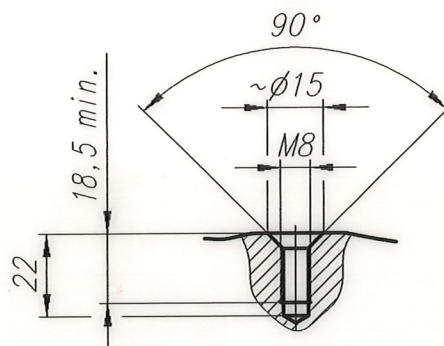
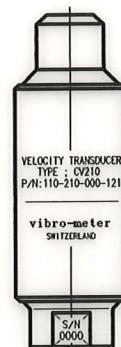
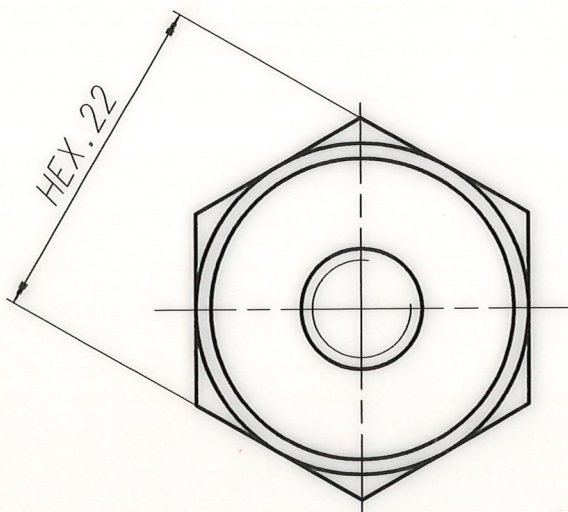
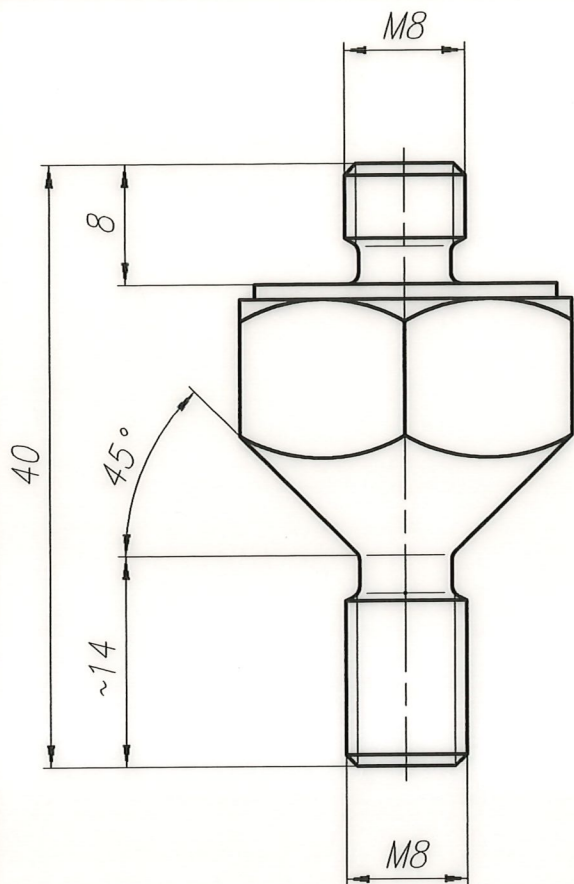


A

B

THE INFORMATION DISCLOSED HEREIN WAS ORIGINATED BY AND IS THE PROPERTY OF VIBRO-METER. VIBRO-METER RESERVES ALL PATENT, PROPRIETARY, DESIGN, USE, SALE, MANUFACTURING AND REPRODUCTION RIGHTS THERETO.

Mounting principle



The mounting stud is made of stainless steel. It has been designed in order to:

- Ensure a good quality, rigid fixing, without the need of sophisticated tools. This is thanks to the conic shape of the base of the stud.

RoHS
DIRECTIVE 2011/65/UE

6					
5					
4					
3					
2	03.02.98	98030	C.S.		To change of explanations !
1	13.01.97	96459	I. Neuhaus	R.D.	Addition of mouting principle and explanations !

Rev.	Date	PM	Drawn	Appr.	Repl. by :
					Repl. for: PZ 4985

Tolerances: \pm mm to 50 mm; \pm mm over 50 mm

Material: 1.4104 (ARKS)

Finish :

FSCM N° S 3960	vibro-meter SWITZERLAND			VM-CAD
Scale 2:1/1:2	Drawn	18.01.90	Sa	
	Checked			
	Appr.	18.01.90	Sa	

Mounting stud Type TA 114
for Velocity transducer Type CV 210

DWG. N°

800-114-000 V 011

A

B