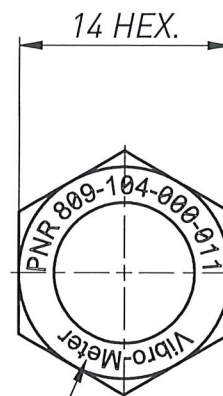
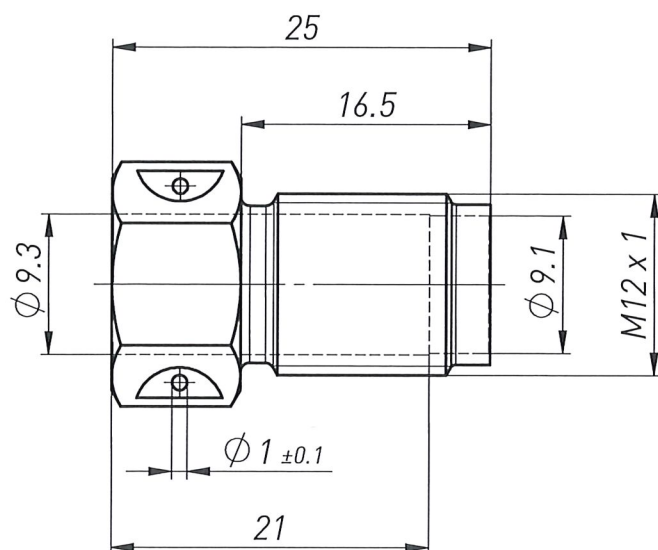


A

B



1:1



MARKING:
FREE ANGULAR
POSITION

RoHS

DIRECTIVE 2011/65/UE

NO MODIFICATION ALLOWED
WITHOUT PRIOR AUTHORIZATION

OF  MANAGER

PURPOSE : MOUNTING ADAPTER FOR
PRESSURE TRANSDUCER
TYPES CP21x, CP75x

MOUNTING TORQUE : 20^{+10}_{-2} Nm

3	12.10.21	21100	C.Jeunet	F.Micco	Vibro-Meter marking added. Pressure transducer types updated.
2	26.06.17	16207	M.Waeber	N.Mancini	Added spot facing on second hex. side of the lock wire hole 1 mm.
1	18.11.03	03465	I. Neuhaus	R. Demierre	MARKING: PNR 809-104-000-011 (FRONT SIDE) WAS MA 104 (HEX.FLAT). Old revision drawn with IDEAS
Rev.	Date	Change N°	Drawn	Appr.	Description

INFORMATION CONTAINED IN THIS DOCUMENT MAY BE SUBJECT TO EXPORT CONTROL REGULATIONS OF THE EUROPEAN UNION, USA OR OTHER COUNTRIES. EACH RECIPIENT OF THIS DOCUMENT IS RESPONSIBLE FOR ENSURING THAT TRANSFER OR USE OF ANY INFORMATION CONTAINED IN THIS DOCUMENT COMPLIES WITH ALL RELEVANT EXPORT CONTROL REGULATIONS. ECN NO. N/A
THIS DRAWING AND/OR ITS DESIGN IS PROPRIETARY AND THE PROPERTY OF MEGGITT SA. THIS DRAWING AND/OR ITS DESIGN IS PROVIDED TO YOU SUBJECT TO THE CONDITION THAT IT SHALL NOT BE REPRODUCED, COPIED, LENT OR OTHERWISE DISPOSED OF, DIRECTLY OR INDIRECTLY. IT SHALL NOT BE USED TO FURNISH ANY INFORMATION FOR THE MAKING OF DRAWINGS, PRINTS OR APPARATUS, OR PARTS THEREFORE, EXCEPT WHERE OTHERWISE EXPRESSLY PROVIDED FOR BY CONTRACT WITH MEGGITT SA.
© MEGGITT SA 2003-2008. ALL RIGHTS RESERVED. NO PART OF THIS PUBLICATION MAY BE REPRODUCED, STORED IN A RETRIEVAL SYSTEM, OR TRANSMITTED IN ANY FORM OR BY ANY MEANS, ELECTRONIC, MECHANICAL, PHOTOCOPIED OR IN ANY OTHER MANNER WITHOUT THE PRIOR WRITTEN PERMISSION OF MEGGITT SA.

MFR
S3960

MSS-CAD



Scale
2:1

Format
A4


MEGGITT

Meggitt SA
Rte de Moncor 4, CH-1752 Villars-sur-Glâne, Switzerland

Material: 2.4669 (Inconel X-750)

Repl.by:

Repl.for:

ISO 2768-f	Linear Tolerances [mm]								Radius / Chamfers [mm]			Tol. on angle [°] 				Drawn	09.07.08	J.Ansermot
	> 0,5 ... 3	> 3 ... 6	> 6 ... 30	> 30 ... 120	> 120 ... 400	> 400 ... 1000	> 1000 ... 2000	> 2000 ... 4000	> 0,5 ... 3	> 3 ... 6	> 6	> 10 ... 10	> 10 ... 50	> 50 ... 120	> 120 ... 400	Check.	10.07.08	L.Macheret
	±0,05	±0,05	±0,1	±0,15	±0,2	±0,3	±0,5	-	±0,2	±0,5	±1	±1°	±30'	±20'	±10'	Appr.	11.07.08	B.Maillard

Floating clamp nut Type MA104

PNR 809-104-000-011

DWG.N°

809-104-000 D 011

A

B